



FM Receiver Silver Quick Start Notice

1. Unpacking

Make sure that all elements are in the box:

- Power supply cable
- Network cable (IP/IO version only)
- 1 box including the documentation CD, a quick start notice and a quality control form.

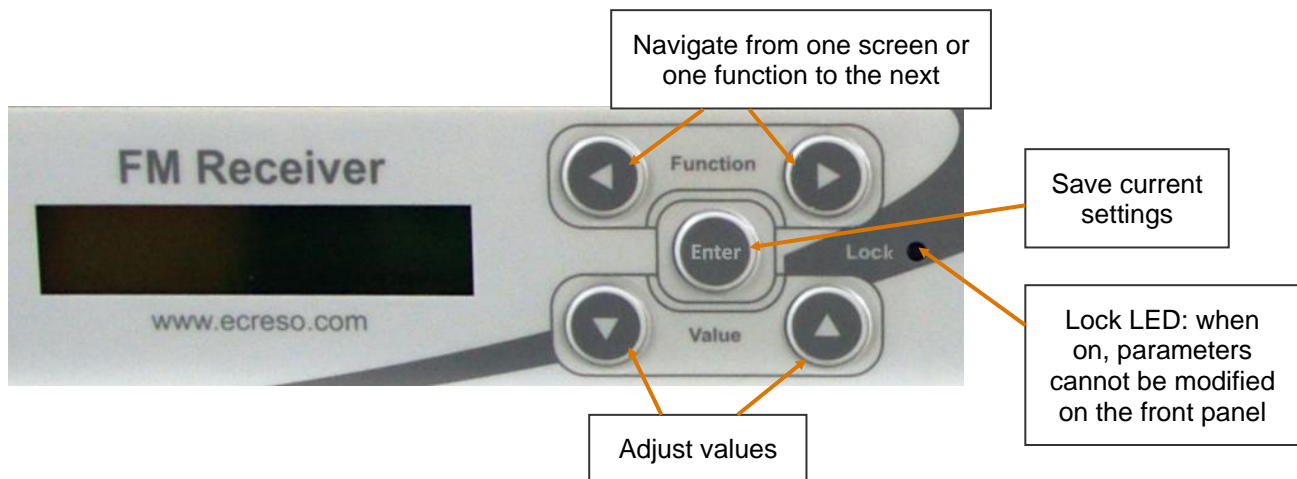
2. Setting the reception frequency

Connect the reception antenna to the RF1 connector and connect the FM Receiver Silver to the mains. See *connection diagram on the last page of this notice*.

Turn on the FM Receiver Silver using the switch on the rear panel.

Now use the front screen application to set your FM Receiver Silver

A set of keys allow you to browse through the menus.



Freq	Level
098.50MHz	035dBu

This is the 1st screen you will see. When the cursor blinks on the frequency, use the Up and Down arrow keys to find the frequency you need.

The frequency is already set.

Control the RF level displayed on the same screen. This value includes the effects of attenuation.

If the RF level is over 100 dBuV, we strongly advise you to set the internal RF attenuator.

Mode	Ant	ATT
AutoS	1	0dB

Press the Function arrow keys until you reach this screen, and keep using the Function keys until the ATT value is selected ("0dB" is highlighted). Press the Value keys to adjust the attenuation to 40 dB.

Use the Function keys to go back to the main RF screen: the level value is now attenuated.

Check the front panel LED peak meter: if the signal reception is correct, you will see no red light. A red light could indicate an issue with the reception frequency.

Conf	Recall / Save
Set1	val- val+

Press the "Enter" key then the Up arrow key to save the settings you just modified.



3. Checking expected output levels

Default output levels are +12 dBu for MPX1, MPX2 and AF outputs. They can be set by internal jumpers at +12 dBu, +6 dBu or 0 dBu.

! If you need to set the jumpers, please read the manual section 2.5

MPX BNC output fine tuning:

See connection diagram on the last page of this notice.

Connect cable from the MPX output of the FM Receiver Silver to the transmitter's MPX input.

Adjust MPX1 and/or MPX2 levels with the rear panel potentiometers using a tuning screwdriver. Turn clockwise to decrease and counterclockwise to increase the MPX output level.

AF XLR outputs fine tuning:

Connect cables from the AF outputs of the FM Receiver Silver to the transmitter's AF inputs.

Adjust the AF outputs levels (AfLev) using the front side application. Press the Function arrow keys until you reach this screen, and keep using the arrow keys until the AfLev value is selected ("0dB" is highlighted). Press the Value keys to fine tune the level; we recommend you do not exceed + 6 dB for this parameter.

Loc	AfLev	HeadP
N	0dB	92%

Conf	Recall / Save
Set1	val- val+

Press the "Enter" key then the Up arrow key to save the settings you just modified.

Turn off the FM Receiver Silver.

4. Installing the FM Receiver in racks

See connection diagram on the last page of this notice.

- Connect the chassis ground to the rack ground.
- Connect cables (MPX BNC and/or AF output XLR) to the transmitter's input.
- Connect the antenna to the receiver's input.
- Connect the FM Receiver Silver to the mains and turn on the unit.

Adjust the complete retransmission chain for expected total signal deviation (see previous section if you need to fine tune)

Conf	Recall / Save
Set1	val- val+

If you adjusted the AF level value, press the "Enter" key then the Up arrow key to save the settings you just modified.

5. Setting Alarms

RF	En	Mi	Ma	Del
65	Y	30	120	127

Press the Function arrow keys until you reach the RF alarm screen, and keep using the Function keys until the desired parameter is selected (corresponding value is highlighted). Press the Value keys to adjust: the minimum threshold (MI, in dBµV), the maximum threshold (MA, in dBµV) and the alarm triggering delay (Del, in s).

Note that the RF level is given after the attenuation (as set in section 2). This is read-only value. Enable monitoring the RF signal by setting the En parameter to "Yes".

Conf	Recall / Save
Set1	val- val+

Press the "Enter" key then the Up arrow key to save the settings you just modified.

Please see the manual for more information on MPX, stereo and RDS alarms.

6. Locking the FM Receiver Silver

Once your FM Receiver Silver is set, lock it to avoid unintentional changes:

Press the Function arrow keys until you reach this screen and the Loc value is selected ("N" is highlighted). Press the Value keys to switch the setting to "Y".

Loc	Af Lev	Head P
N	0 dB	92%

Conf	Recall / Save
Set1	val- val+

Press the "Enter" key then the Up arrow key to save the settings you just modified.

The front panel Lock LED will be lit when the FM Receiver Silver is locked.

7. Connecting and setting the IP/IO version

Press the Function arrow keys until you reach this screen. Press the Value keys to modify the IP address.

Device	IP	addr
	172.017.002.172	

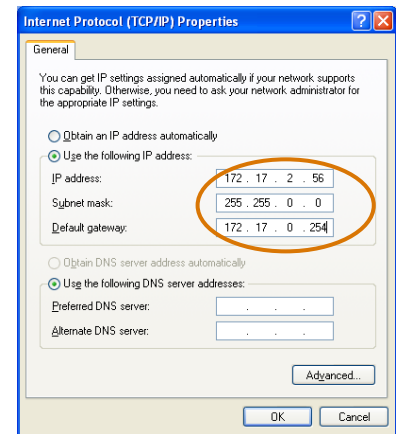
Press the Function arrow keys until you reach this screen. Press the Value keys to modify the netmask.

Device	Netmask
	255.255.000.000

Connect the network cable (B) between the FM Receiver Silver's Ethernet port and a PC. *See connection diagram on the last page of this notice.*

You will need to set an address on the PC in the same range as the new IP address, so it is compatible with the IP address in the FM Receiver Silver.

- For this, if using Windows 2000 or Windows XP, go to:
 - Control panel/Network connections/
 - Local Area Connection / Properties
 - Click on Internet Protocol (TCP/IP) in the scroll-down menu then on "Properties".
 - Add the IP address and the sub-network mask.
- With Windows Vista or 7, go to:
 - Control panel / Network and Internet / Network and Sharing Center.
 - Click on "View Status" for your local area connection, and on Properties
 - Click on Internet Protocol 4 then on Properties.
 - Add the IP address and the sub-net mask.



Open a Web Browser (Google Chrome, Mozilla Firefox, Internet Explorer...) and enter the new IP address in the address bar.

The default login and password are "Admin" and "admin".

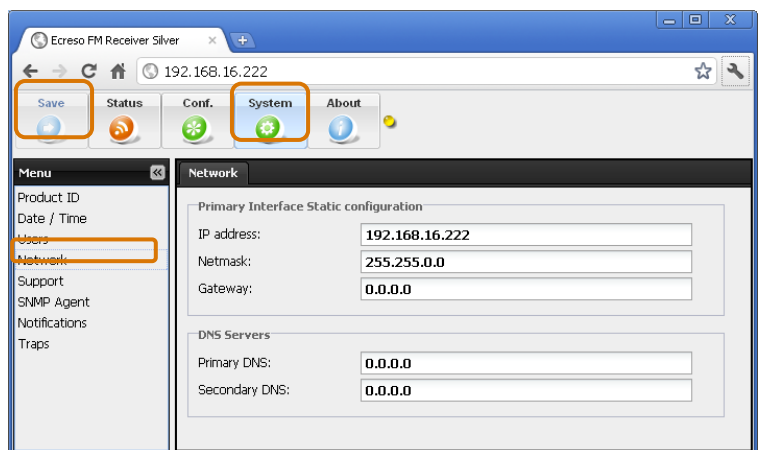
Click the 'System' button and display the 'Network' page.

Modify the gateway.

Click the 'Save' button.

You will be able to view and modify all parameters using this web interface.

Please see the manual for more information on the embedded web site.



For technical questions, please contact: support@broadcast-silver.com or ussupport@audemat.com

Eceso is certified ISO 9001 and our quality department welcomes your feedback. For any question, do not hesitate to contact directly our quality manager:

quality@worldcastsystems.com



Silver ® is a registered trademark



FM Receiver Silver

Rear panel connectors

